

MoMISC Meeting Notes

Date: February 13, 2014
Time: 10:00 am-12 noon
Place: TNC Molokai Office
Recorder: Ed Misaki

I. Call to Order – Chevy Levasa, 10:04 am

- Introductions – around the room.
- Announcements:
 - Lisa Hadway is new DOFAW Administrator replacing the retired Roger Imoto.
 - Butterfly garden (Chevy's Project) on Molokai Dispatch front page.
 - Kama still out on sick leave.
 - Steph Dunbar-Co has been hired as East Slope Project Manager for TNC Molokai Program.

II. Molokai Updates – Lori

- Mulesfoot – DOFAW, TNC helped MoMISC remove 39 in Forest Reserve
- Atriplex (quail bush) – DOFAW crew helped MoMISC with removal Feb 3-4. Over 300 removed, mostly mature. Will have follow up removal in March.
- Also did rubbervine survey in Kamalo. One new population (100) found by JN.
- ATF found at Kahanui. Future surveys are being planned.
- Bo Tree in Kaunakakai was treated using chain saw girdle with help from James Espaniola and John Neisman.
- Wailau (Lance) African Tulip and Ginger survey/treatment – 48 AT treated, Ginger in over a 6 acre area treated over 2,400 (3.6 core area). Wai from TNC assisted with heliops.
- Oct 28-31 James and crew (with Wai and volunteers) began treating blackberry in Puu Alii NARS.
- Bernarr Kumashiro HDOA wants early detection for Hala scales on Molokai.

III. Maui Nui/Statewide Updates – Lori

- **Legislative**
 - Over 20 Invasive species bill. Joint approval for HISC to refund at 2008 levels.
 - Nursery Stock Pest Bill, to be able to fine nurseries who sell products with pest. Must past Judiciary Committee to keep moving.
 - Multiple LFA bills also in the works.
 - Coconut Rhinoceros beetle – USDA created incident command to tackle.

IV. Old Business - Lori

- Bo Tree – what should we do about the Kalae population? Bo Tree seedlings showing around Judge's tree. Also showing up in Kalamaula. Bill will talk to a friend who knows the landowner.
- Long Thorn Kiawe Removal – more showing up on between Kaupoa and Laau Point.
 - Need strategy on survey, to include from Laau to Hale o Iono.
 - Need dedicated staff, not feasible for current MoMISC staff.
 - Need to talk to Molokai Ranch (maybe Riki Cooke?)

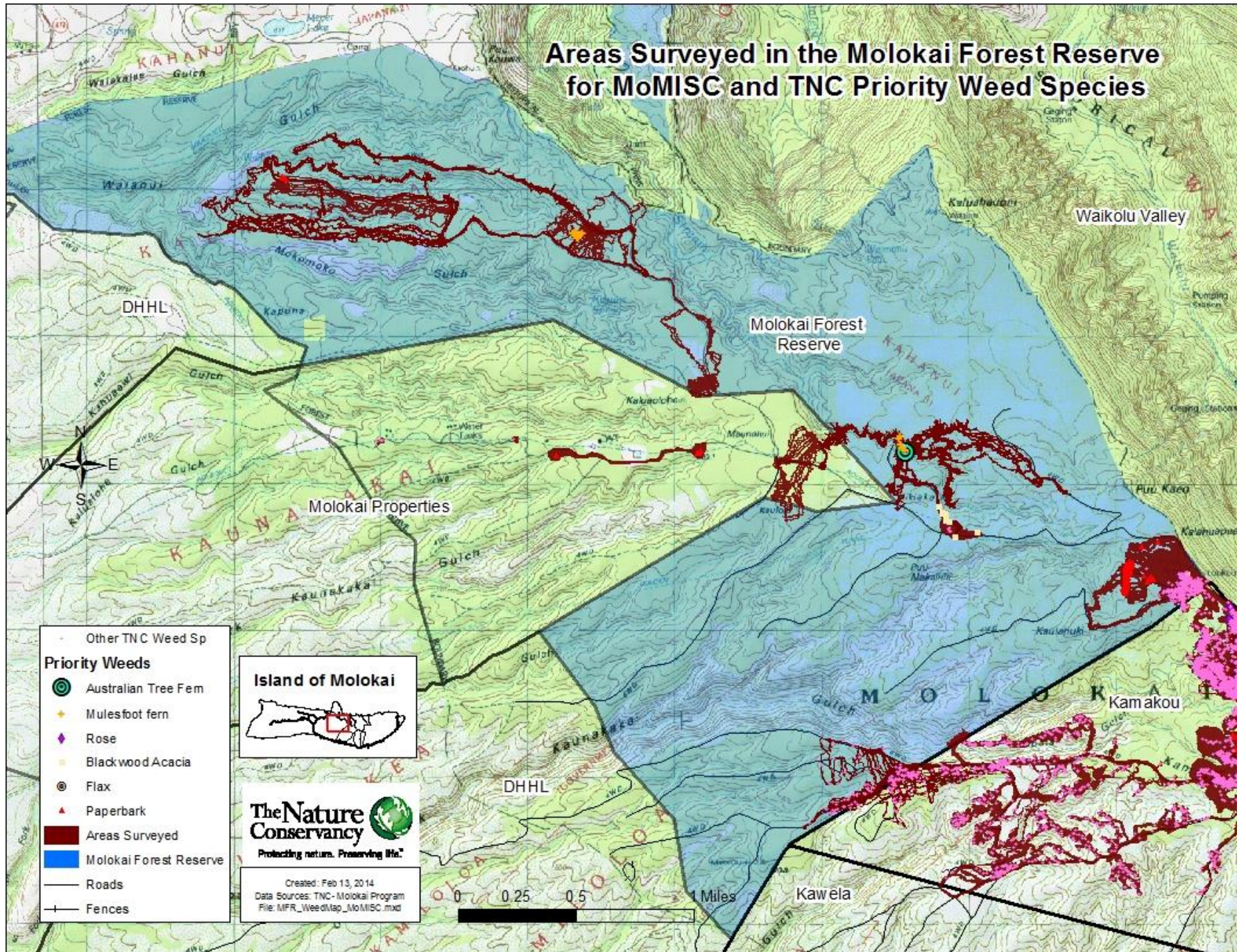
IV. New Business, Committee Members Concerns or Other Activities:

V. Next Meeting Date: May 15, 2014, 10 am – Noon, TNC Conference Room.

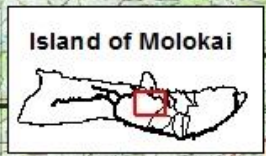
Feb 13, 2014 Attendance: **MoMISC**-Lori Buchanan; **USDA PHSS Molokai Office**-Chevalier Levasa; **NPS**-Paul Hosten (KALA); **Maui County**--Ella Alcon (County Council Liaison); **DOFAW**—Lance De Silva, James Espaniola (**NARS**); **Plant Material Center**-- Glenn Sakamoto; **Puu O Hoku Ranch**-Grace Diehl, **Wiliwili Hawaiian Plants**-Bill Garnett; **TNC**-Wailana Moses, Ed Misaki; **NRCS**--Wallace Jennings, Jessica Ludgate; **Molokai Dispatch**-Catherine Cluett

Past Attendees: **MoMISC**-Lori Buchanan, Kamalani Pali, Justin Avelino; **MISC**-Teya Penniman; **DOAR**-Bill Puleloa, Cecile Walsh; **USDA PHSS Molokai Office**-Chevalier Levasa; **Plant Material Center**-- Glenn Sakamoto, Bob Joy; **NRCS**--Wallace Jennings, Jessica Ludgate, Mike Brady, Mila Apisa (Samoa); **Mycogen Biologist**--Donald Maum; **Monsanto**--Ray Foster; **DOFAW**—Lance De Silva, Glenn Shishido, John Neizman, Rob Hauff, James Espaniola (**NARS**); **DLNR**--Mindy Wilkinson; **CGAPS**--Christy Martin; **USFWS**--Karl Buermeyer, Jeff Herod; **NPS**-Paul Hosten (KALA), Guy Hughes (KALA), Steven Anderson (HALE) Jesse Rogers, Tavita Togia (Ecologist, Samoa); **HDOA**--Bob Yonahara (Maui), Danielle Downey/Jackie Robson (Bee Mite/Small Hive Beetle); **UH Extension Service**--Kali Arce, Alton Arakakai, Jennifer Hawkins; **MLSWCD**-Debbie Kelly, Charity Dudoit; **Maui County**--Ella Alcon (County Council Liaison), Kuhea Paracuelles; **Contract Hunting**--Joey Joao; **DOT**--Carl Brito (Molokai Airports); **QLCC**--Kathy Davis-; **Puu O Hoku Ranch**-Grace Diehl, Fred Richardson, Kathy Coelho, Kristian Coelho; **Molokai Land Trust**-Butch Haase, Clayton English; **Wiliwili Hawaiian Plants**-Bill Garnett; **Molokai Times**-Carolyn Girard, Dayanti Karunaratne; **Molokai Dispatch**-Catherine Cluett; **MoPEP**-Ane Bakutis; **East Slope**-Steph Dunbar-Co; **TNC**-Ed Misaki, Russell Kallstrom, Wailana Moses

Areas Surveyed in the Molokai Forest Reserve for MoMISC and TNC Priority Weed Species



- Other TNC Weed Sp
- Priority Weeds**
- Australian Tree Fern
- Mulesfoot fern
- Rose
- Black wood Acacia
- Flax
- Paperbark
- Areas Surveyed
- Molokai Forest Reserve
- Roads
- Fences



Created: Feb 13, 2014
 Data Sources: TNC - Molokai Program
 File: MFR_WeedMap_MoMISC.mxd





Atriplex lentiformis (Quailbush) - Removal and Survey
Kalamaula and Oloolo, Molokai